



"Our mission is to help people be disciples; lifelong learners and followers of Jesus Christ."



Bethel will have a VBS program this summer... Scan the link to the left for information and we will welcome the first 50 children registered. Do you or someone you know have any yard games to lend for VBS? We've gotten a few but are still looking for games such as giant connect 4, horseshoes, lawn dice, etc. We are also looking to borrow items for water day such as slip and slides, sprinklers, bubble wands, etc. Please contact Diane Sanders at dsanders7@hotmail.com.

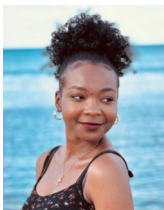
Have you ever played pickleball? Every Monday from 1:00 to 3:00pm and Thursday from 6:00 to 8:00pm in the Bethel gym several Bethel members and their friends get together for some friendly pickleball fun! We now have two courts and rotate teams in so that everyone gets plenty of exercise! If you have any questions contact the Bethel office or Carla Thompson.



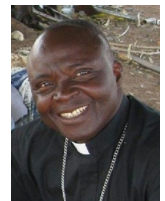
Wednesday Morning Landscaping... It's that time again! Every Wednesday morning will be landscape morning at Bethel for approximately 3 hours. Projects will include landscape planning, shrub and plant maintenance, transplanting, erosion fighting, flower bed prep/cleanup and anything else we might decide to do. You don't need a green thumb! Everything is flexible so be here when you can. Materials and tools that we have will be supplied, if you have a favorite tool bring it along. For further info contact the property management team at property@bethelgurnee.org.



Lakeshore Singers Concert... Do you like 60s music? Then you will enjoy a concert by the Lakeshore Singers at 3:00p.m. today, June 11th at the Shepherd of the Lakes Lutheran Church in Grayslake. There will be selections from the Beatles, Simon and Garfunkel, The Beach Boys, and many others. Please see Dave Ross for tickets or more information.



Dorcas Salifu Graduation.... Dorcas Salifu graduated from Carthage College on May 28th with a degree in Neuroscience. She is the daughter of Pastor Nicholas Salifu of the churches of Northern Ghana, a mission supported by Bethel. Her dream is to pursue a Master's degree in Epidemiology/Infectious Diseases. She has just accepted a research assistant position at the University of Maryland, which should be a positive step toward achieving her goal. Dorcas is seeking help funding her move to Maryland and has set up a GoFundMe account for that purpose. If you are interested/willing to help Dorcas with this, please contact Dave Ross.



Bethel Website: www.bethelgurnee.org **Office:** 847-244-9647 **Preschool:** 847-244-9672 **Email:** office@bethelgurnee.org



SCAN ME
Scan for the Bethel Website

Pastor Ben Squires - Cell: 224-419-5519 / pastor@bethelgurnee.org
Donna Stutzman - Preschool Director / preschool@bethelgurnee.org
Cindy Daluga - Disciple Care Coordinator / cindy@bethelgurnee.org
Ben Sanders - Mission Facilitator / office@bethelgurnee.org

DEADLINE for putting an article in the Beacon is 9:00 a.m. on Wednesday.



SCAN ME
Scan for the Bethel Calendar

June Service Roster

	Thursday 6:30 pm	Sunday 9:00 am	Thursday 6:30 pm	Sunday 9:00 am
	June 1	June 4	June 8	June 11
ELDER	Mike Bandman	Paul DeLassus	Mike Bandman	Paul DeLassus
COMM. ELDER	Bob Souza	Jack Warneke	Bob Souza	Jack Warneke
ACOLYTES	Nate Gutzke	Sharon Sundararaj	Tanna Megerle	Gianna Berezcky
USHER 1	Scott Gutzke	John Schultz	Don Heidlauf	
USHER 2	Paul Werfelmann		Paul Werfelmann	
FELLOWSHIP				
ALTAR GUILD	Margie Tatgenhorst			
COUNTERS	Monte Stoltzman			
Anyone unable to serve, contact Cindy Daluga at Cindy@bethelgurnee.org				Updated 6/5/23

WELCOME TO OUR VISITORS

We are pleased you chose to be with us in worship today, and pray the Lord blesses you as he has blessed us with your presence. Our goal is to help people find the right place for them to hear God's word and serve His mission. We'd love to support you in that spiritual journey. Please take a moment to complete an attendance card and place it in the Offering plate or give to an usher. This card will help us connect with you.

NURSERY

We have two rooms available for your use. When the service is in the sanctuary, the nursery is down the hall just past the restrooms. If the service is held in the gym, the nursery is in the youth room at the far end of the gym.

Summer Worship Schedule

Worship Service Thursday 6:30pm

Worship Service Sunday 9:00am

Communion 1st, 3rd, 5th Sunday & the Thursday prior

Office Hours Mon –Thurs 9am-3pm & Fri 9am -12pm

Call ahead because times may change.

VERBAL ANNOUNCEMENTS

for Worship Service need to be submitted to the Bethel Office by Thursday morning.

DEADLINE for putting an article in the Beacon is 9:00 a.m. on Tuesday.