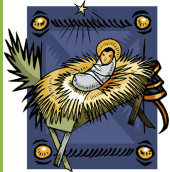


Worship Services



Christmas Eve Candlelight Worship

6:00 p.m. & 10:00 p.m. (New time)

Christmas Day Worship

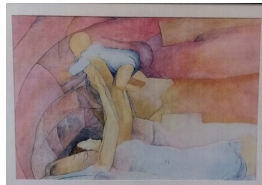
with Communion 10:00 a.m.

Sunday, December 29

There will only be ONE service at 10:00 a.m.
with fellowship following.

Mother and Child Drawings by Luke McFadden

Selected by your vote, *Afternoon Flight* will be on permanent display at Bethel. (receiving 32 of 68 votes) The funds were allocated by the Church Council from the Rehm Memorial Fund, established for the support of ministry to children.



Caroling at Gurnee Meadows TODAY, Dec. 22,

Bethel Choir members and Bethel families will be caroling at Gurnee Meadows, at 4:00 p.m. Anyone is welcomed and invited to join us. Caroling does not require wonderful singing voices, just joyful ones!! This is an informal gathering of our Bethel family and friends to share God's Christmas joy with the residents of Gurnee Meadows. We will meet there at building 2 (1380 Pauly Drive, Gurnee) about 3:45 p.m. and start singing at 4:00 p.m. Then we will walk across the parking lot to building 1 (1400 Pauly Drive, Gurnee) and start singing there about 4:20 p.m. We will finish by 4:45 p.m. See Ann Souza or a choir member today if you have questions.



Snail Mail Station One way in which to encourage others in our "Life Together" in Christ is to send them a handwritten note. We've supplied the cards and envelopes. You write the note, and then the Bethel staff will make sure to address it and get it in the mail. The station is located outside the church office.



Sunday School Lesson for Today Despite opposition from Israel's neighbors, repairs are completed in record time. Nehemiah, Ezra, and the priests lead the people in a joyous rededication of the wall. As God's people return to the Promised Land after a long and tragic exile, God demonstrates His faithfulness and points to even greater restoration in the Last Day. This week's Bible verse is, "You are a gracious and merciful God." (*Nehemiah 9:31*) Remember, there will be no Sunday school next week (December 29). Classes will resume on January 5.



2020 Altar Flower Sign Up The new flower sign up sheets are up for 2020. The vases of fresh flowers placed on the altar every week are made possible by Bethel Members who sign up on the flower chart calendar (located on the wall to the right of Pastor's office). Church members may share birthdays, anniversaries, or remember loved ones through the gift of altar flowers. We ask a minimum donation of \$25 for each floral arrangement. Please place the donation in the collection plate, and clearly mark the envelope "Altar Flowers" or give donation to the Office. After 2nd service you may take your flowers home to enjoy or leave them and the Altar Guild will give them to Kathy Schwartz to take to shut-ins for their enjoyment.



Meet the Staff! **Name:** Cindy Daluga

Job Title: Disciple Care Coordinator

How long have you been at Bethel: I just recently started this position but have been attending Bethel since 1995.

Family: I'm married and have 5 children that all grew up at Bethel.

Best thing about Bethel? The presence of God I see everywhere in the people here and how they care for one another.

Favorite color? Pink

**New Portals of Prayer
are on the Hub.**

Bethel Website: www.bethelgurnee.org **Office:** 847-244-9647 **Preschool:** 847-244-9672 **Email:** office@bethelgurnee.org

Pastor Ben Squires Cell: 224-419-5519 / pastor@bethelgurnee.org

Katrina Johns - Equipping Coordinator Direct line: 224-623-0800 / katrina@bethelgurnee.org

Donna Stutzman - Preschool Director / preschool@bethelgurnee.org

Cindy Daluga - Disciple Care Coordinator / cindy@bethelgurnee.org

Lisa Schwarz - Office Manager / lisa@bethelgurnee.org



Serving Christmas Eve 6:00 p.m.

- Elder:** Mike Bandman
- Asst Elder:** Bob Souza
- Acolyte:** Michaela Rosenthal, Jude Squires
- Ushers:** Scott Gutzke, John Schultz
- Lay Readers:** Scott Gutzke, Owen Squires, Pat Rasmussen
- Greeters:** Jones Family, Chuck Kozlik Family

Serving Christmas Eve 10:00 p.m.

- Elder:** Jack Warneke
- Comm. Elder:** OPEN
- Acolyte:** Aiden Friedman, OPEN
- Usher:** OPEN, OPEN
- Lay Readers:** Kelley Dorner, Lexi Dorner, Katrina Johns

Serving Christmas Day 10:00 a.m.

- Elder:** Mike Bandman
- Comm. Elder:** Monte Stoltzman
- Acolytes:** Ashley Plapp, Jacob Plapp
- Ushers:** Don Heidlauf, OPEN
- Lay Readers:** Elizabeth Blasko, Joan Blasko
- Greeters:** Kreamer Family, Kruse Family

DEADLINE for January Big Buzz
Monday, December 30 before 9:00 a.m.

This Week's Calendar

Monday, December 23

- 5:30 p.m.—Uline Basketball
- 7:00 p.m.—Indian Guides in Building

Tuesday, December 24 **Office Closed**

- 6:00 p.m.—Christmas Eve Candlelight Service in Gym
- 10:00 p.m.—Christmas Eve Candlelight Service in Sanctuary

Wednesday, December 25 **Office Closed**

- 10:00 a.m.—Christmas Day Festival in Gym

Thursday, December 26 **Office Closed**

- 7:00 p.m.—COOL Board

Friday, December 27 **Office Closed**

Pastor & Katrina's Day Off

Saturday, December 28

Pastor & Katrina's Day Off

Sunday, December 29—**Only ONE Service**

- 10:00 a.m.—Communion in Gym
- 11:00 a.m.—Fellowship
- 6:00 p.m.—Offsite: Mosaic Initiative Prayer Meeting

Worship Schedule

Sunday 8:00 AM & 10:45 AM

Communion - 1st, 3rd, 5th Sunday

Office Hours

Mon. & Wed. 9AM-3PM,

Tues. & Thurs. 11AM-3PM / Friday 9AM-12PM

Call ahead because times may change.

Last Week's Attendance

8:00 am—129; 10:45 am—64

Sunday School—74

Serving Next Week—Only ONE Service

10:00 AM

- Elders:** JJ Jones
 - Comm/Asst. Elder:** Monte Stoltzman
 - Acolytes:** Holly Faitsch, Kelsi Mulley
 - Lay Readers:** David Lubega, Monte Stoltzman
 - Ushers:** John Schultz, Lance Rasmussen
 - Greeters:** Lahera Family, Rae Noice
 - Fellowship:** Susan Squires
 - Dec. Altar Guild:** Kathy Schwartz
 - Dec. Counters:** Chris Mason
- Sheila Bunnell
Diane Sanders